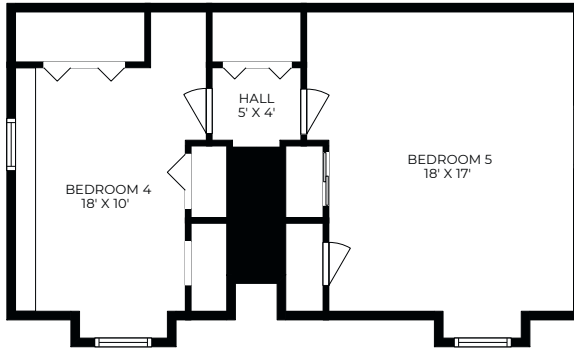
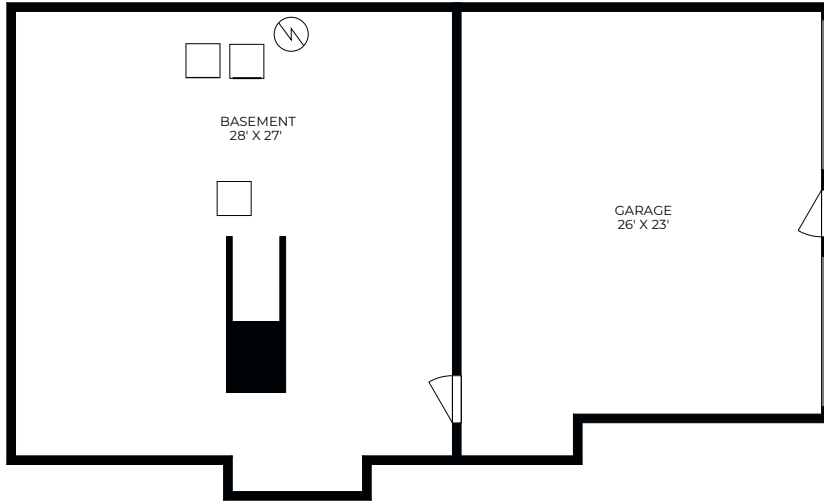


# 72 Andover Road - Billerica, MA

UPPER LEVEL



LOWER LEVEL



**TOTAL: 2575 sq. ft**

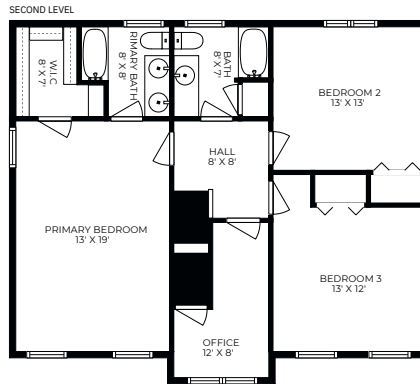
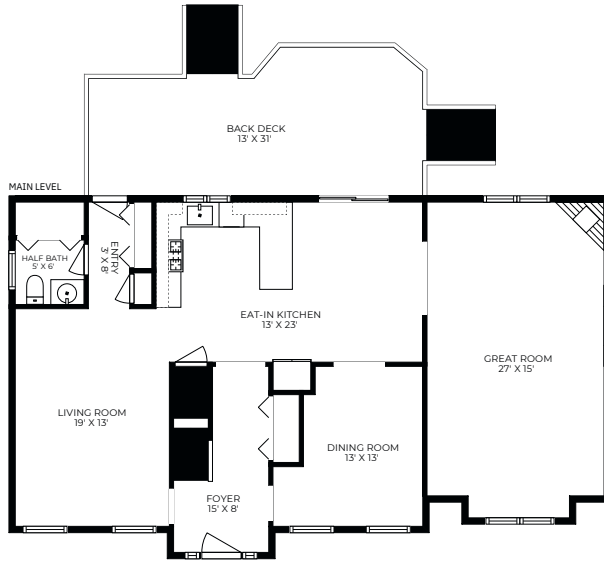
LOWER LEVEL: 0 sq. ft, MAIN LEVEL: 1194 sq. ft, SECOND LEVEL: 845 sq. ft, UPPER LEVEL: 536 sq. ft

EXCLUDED AREAS: BASEMENT: 665 sq. ft, GARAGE: 501 sq. ft, BACK DECK: 322 sq. ft,  
LOW CEILING: 31 sq. ft



**Christopher Gentile**  
**REALTOR®**  
**(617) 835-0845**  
**CGentile@RTNRealty.com**

# 72 Andover Road - Billerica, MA



TOTAL: 2575 sq. ft

LOWER LEVEL: 0 sq. ft, MAIN LEVEL: 1194 sq. ft, SECOND LEVEL: 845 sq. ft, UPPER LEVEL: 536 sq. ft

EXCLUDED AREAS: BASEMENT: 665 sq. ft, GARAGE: 501 sq. ft, BACK DECK: 322 sq. ft,  
LOW CEILING: 31 sq. ft

This Floor Plan Is An Approximation, And Is Intended For Marketing Purposes Only



**Christopher Gentile**  
**REALTOR®**  
**(617) 835-0845**  
**CGentile@RTNRealty.com**